

Architect:
Yossi Melamed, R.A.
462 Broadway, Third Floor
New York, NY 10013
Tel: 212-203-5053
Mobile: 917-658-7236
yosef@melamedarchitect.com
www.melamedarchitect.com

Melamed Architect, P.C.

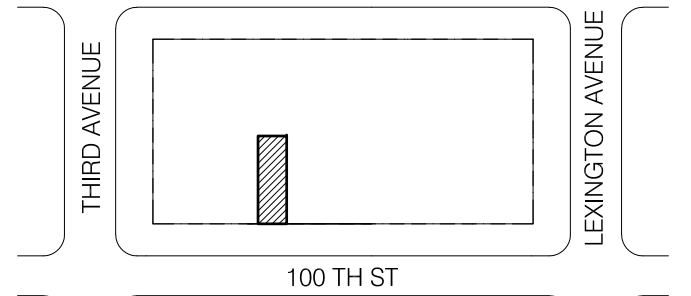
Structural & M.E.P. Engineer:
Sharon Engineering, P.C.
Consulting Engineers
34-27 Steinway Street, Suite 201
(T) 718-752-1500, (F) 718-752-9404
rsharon@sharonengineering.com

DATE	REVISION NO.	COPY TO	COORDINATION	REVIEW	APPROVAL	BID	CONSTRUCTION
02.07.2013	1	Client's Review					
02.19.2013	2	MEP & Structural					
06.03.2013	3	DOB Filing					
09.27.2013	4	DOB Review					
01.22.2015	5	Issue for Bidding					
02.27.2015	6	DOB Upload					
03.19.2015	7	Issue for Bidding					
04.07.2015	7	DOB					

Construction Legend:

- Fiber cement cladding by "Equitone" or "Fibre C" & 6" insulated Stud Wall
- 8" C.M.U Wall (3 HR Fire Rated) UL# U904
- 10" C.M.U Bearing Wall (3 HR Fire Rated) & 4" insulated stud wall
- Insulated Interior Partition
- Smoke Detector
- Carbon Monoxide Detector
- Smoke Alarm
- Illuminated Exit Sign, Provide Egress Hardware at These Locations

100th Street Development
168 East 100th Street
New York, NY 10029



NOTICE

ALL DRAWINGS, SPECIFICATIONS AND COPIES THEREOF FURNISHED BY THE ARCHITECT ARE AND SHALL REMAIN HIS PROPERTY. THEY ARE NOT TO BE USED ON THE OR ANY OTHER PROJECT UNLESS WRITTEN PERMISSION IS GIVEN BY THE ARCHITECT.

DO NOT SCALE DRAWINGS. CONTRACTOR MUST VERIFY AND BE RESPONSIBLE FOR ALL MEASUREMENTS AND CONDITIONS PRIOR TO BEGINNING ANY WORK. REPORT ALL DISCREPANCIES TO THE ARCHITECT IN WRITING.

ALL WORK, MATERIALS, ASSEMBLIES AND CONSTRUCTION SHALL BE IN CONFORMANCE WITH CODE REQUIREMENTS OF ALL GOVERNMENTAL AGENCIES HAVING JURISDICTION.

CONSULTANTS OR ENGINEERS WHOSE NAMES APPEAR ON THIS DRAWING WILL BEAR PROFESSIONAL AND LEGAL LIABILITY FOR THE DRAWING AND ITS USE IN LIEU OF THE ARCHITECT.

THE ARCHITECT HAS NOT BEEN RETAINED TO SUPERVISE THE CONSTRUCTION OF THIS PROJECT.

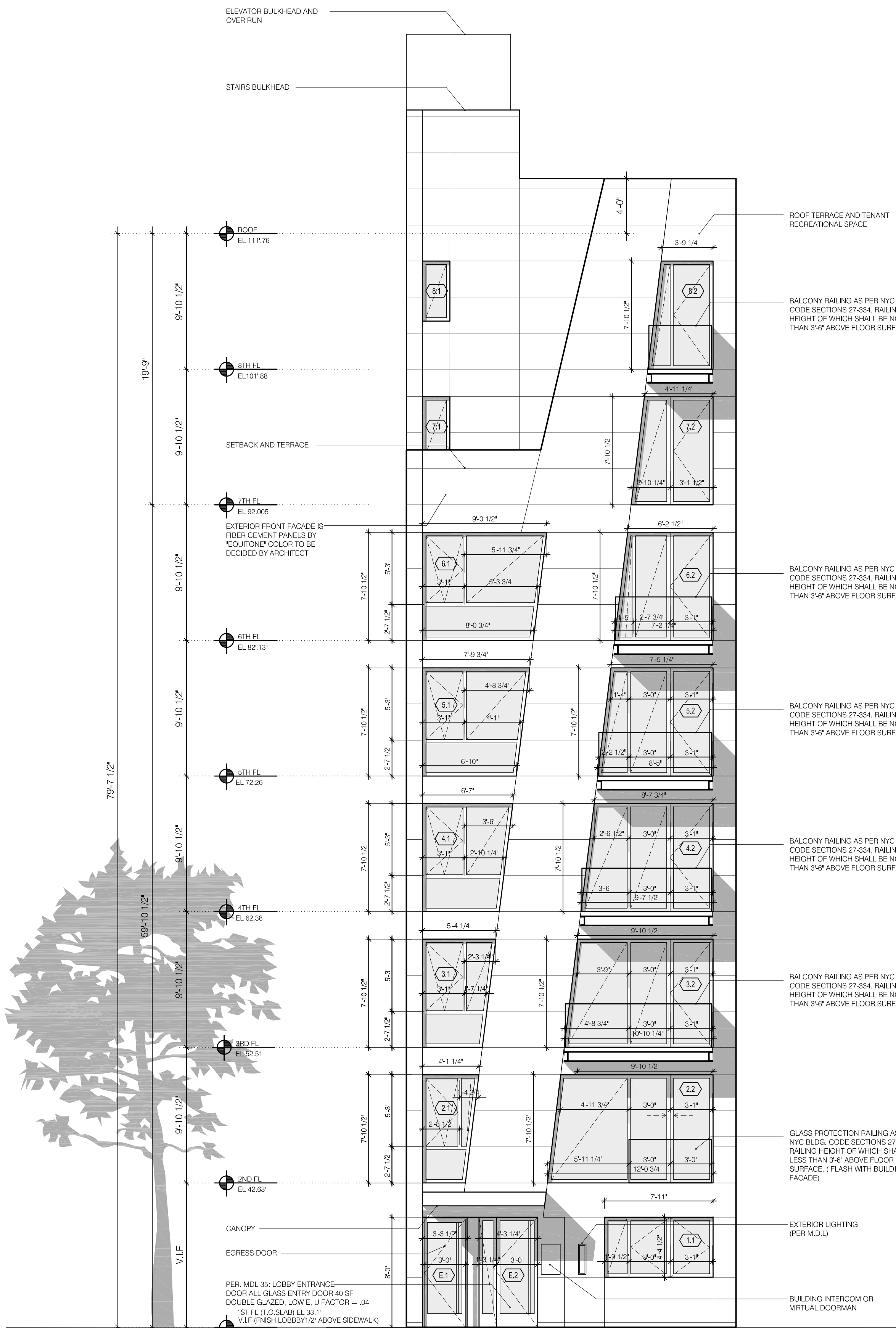


ISSUED FOR D.O.B.

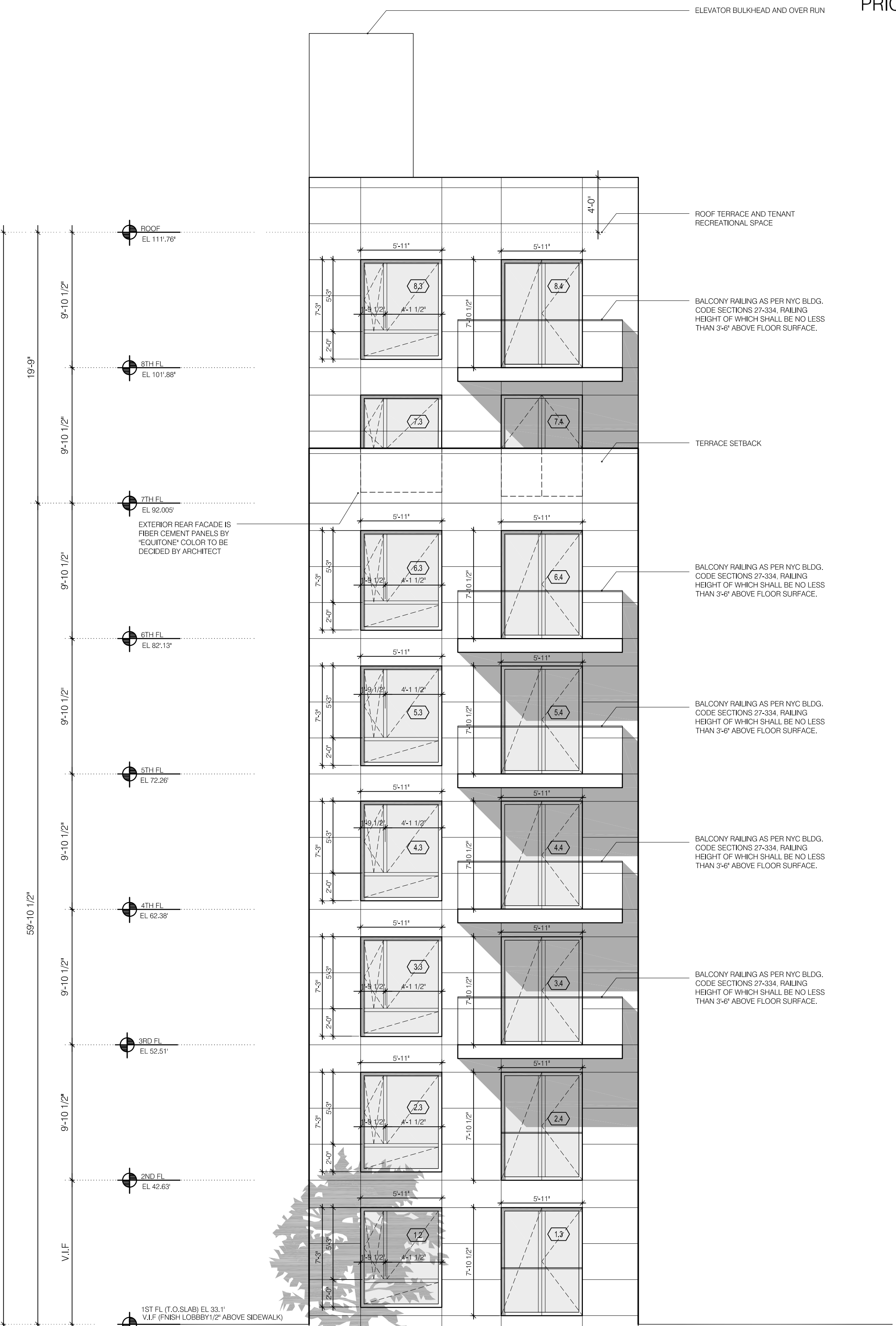
DRAWING TITLE:
NORTH & SOUTH ELEVATION

DRAWING NUMBER:
A-200.00

DATE: January 8th, 2013
SCALE: AS NOTED



1 NORTH ELEVATION
SCALE: 3/16" = 1'-0"



2 SOUTH ELEVATION
SCALE: 3/16" = 1'-0"